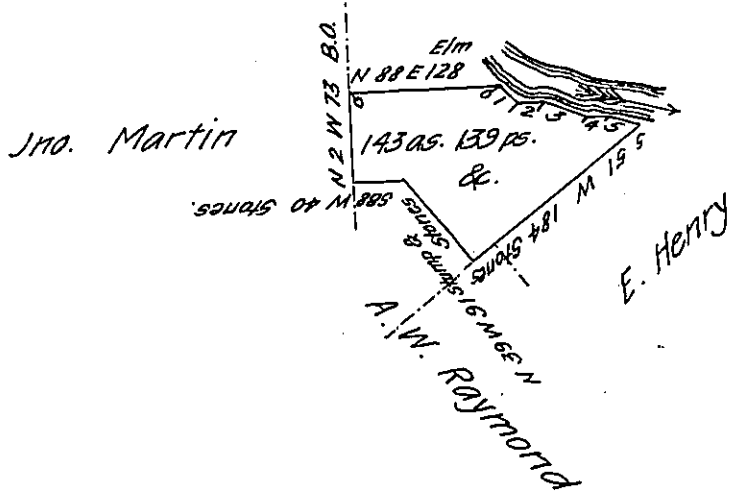


Courses & distances down  
French-creek commencing  
at Elm.-

- No 1. 549 E 20
- " 2 569 E 20
- " 3 573 E 44
- " 4 587 E 14
- " 5 581 E 26 past.

5<sup>th</sup> Don<sup>tr</sup> dist  
No 1019



Draft of a tract of land situate in Frenchcreek township Venango  
county, West of the Allegheny river and southwest of and adjoining French creek

Surveyed December 3<sup>rd</sup> 1839 for William Russel, on improvement and  
settlement Tho<sup>s</sup> Hamilton D.S.

Jac. Gallade Esq.

Surveyor General of Pa.

IN TESTIMONY that the above is a copy of the original remaining on file in  
the Department of Internal Affairs of Pennsylvania, made  
conformably to an Act of Assembly approved the 16th day of  
February, 1833, I have hereunto set my Hand and caused  
the Seal of said Department to be affixed at Harrisburg,  
this   tenth   day of   March   1908

*Henry Howell*  
Secretary of Internal Affairs.